

PROBLEMS / THE CHALLENGE Medium sized rooms like recording studios or your dedicated rooms for listening, for recorded or live played music, needs a most efficient surface to diffuse all kind of interfering wall reflections and provide a highly homogeneous diffuse sound field.

As known, the smaller the room is the most difficult is to correctly treat it acoustically. Then, the practical challenge is to have really good simultaneous results: aesthetically, acoustically and...not expensive !



THE UNIQUE SOLUTION To solve this problem, learning from our experience and using almost all published international bibliography, at the ESR in Athens, we decided to try to design and produce a new kind of acoustical materials using mainly psychoacoustic knowledge. The result is the most powerful and aesthetic diffusing surface in the acoustic industry.



The art of Sound

Generally, all that is necessary as a room treatment are minimum 9 Roundffusors® (or more, from case to case) and your audio system or your musical instruments. It is supposed that will be a carpet on the whole floor surface. Don't forget that all 9 Roundffusors occupies only a total area of 176x176 cm from one wall. No other room changes are required. May be used in all critical listening rooms including recording & TV studios, home theatres, quality control rooms, film mix and dubbing stages, CD mastering, music practice or normal residential rooms and also rooms for professional reviewers.

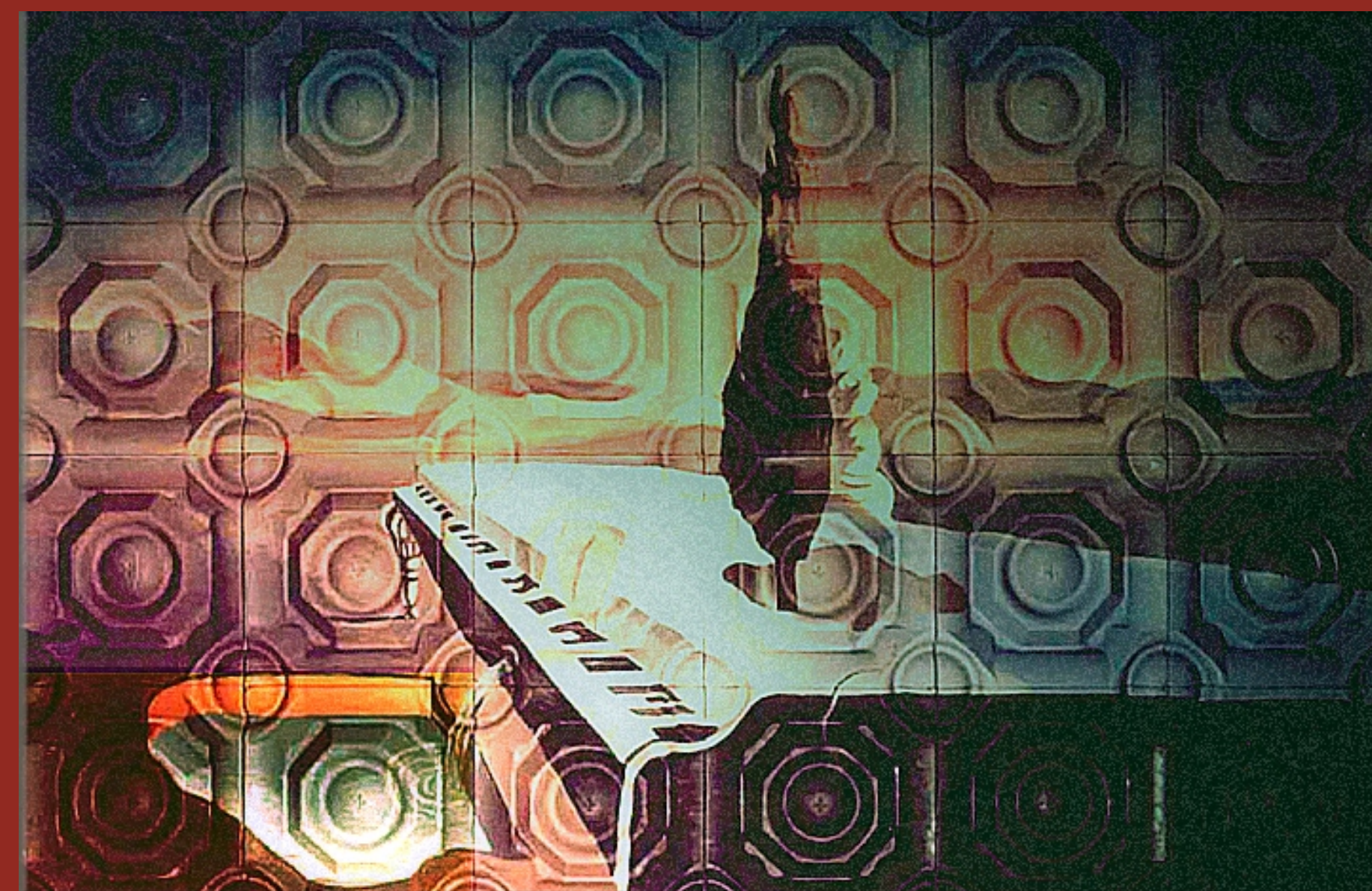


The Sweet Spot becomes obsolete ! This means that almost every person in the room senses the same sound mix. The self adaptive bass absorption offered by the Roundffusor removes the harmful dynamic masking effects induced by the low and very low frequencies toward the right of the audio scale. This is enough for the R1 to be named revolutionary.



The new design of the Roundffusor1® offers the industry's highest diffusion quality providing a natural sounding ambiance and the most effective diffusive control of interfering reflections. The diffusing Roundffusor1's 3D lobe may be easily sensed at more than 12 meters and hearing it is like reconstructing the initial "aura" envelope from the room's recording session. The live or recorded music will have a sound beautifully similar from room to room. The acoustic repeatability and audio material interchangeability will be a relative easy task in all situations for any equipment.

The Pleasure of Music

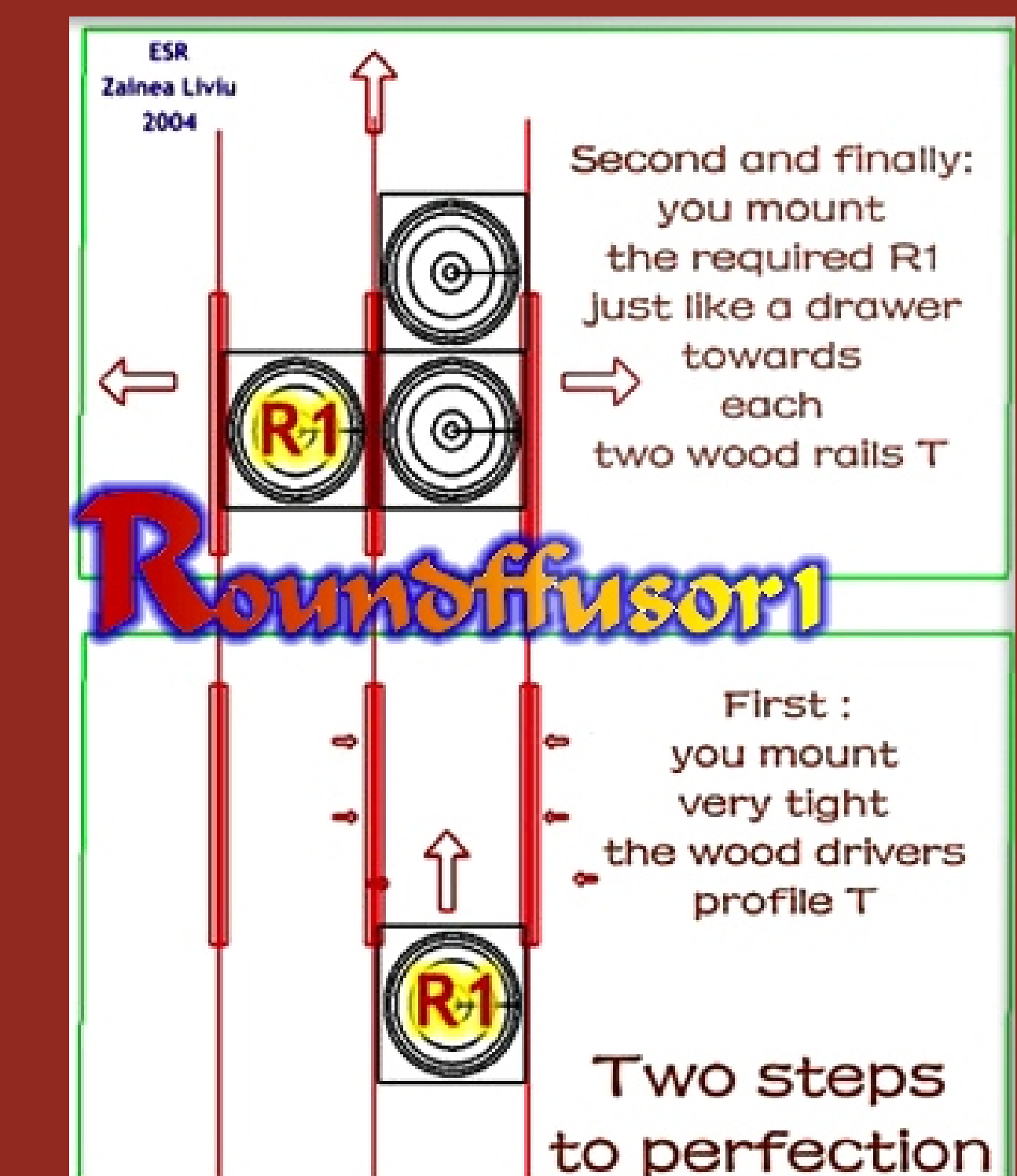


Using the R1 makes the Sweet Spot becoming obsolete! This means that almost every person in the room senses the same sound mix. The self adaptive bass absorption offered by the Roundffusor removes the harmful dynamic masking effects induced by the low and very low frequencies toward the right of the audio scale. This is enough for the R1 to be named revolutionary.

It's very hard to compare the price & sound quality differences between our complex diffuser and the concurrency. The R1 is unique and the most advanced technologically product on the market. Of course, don't forget that for what is offering is the less expensive from all other products. Choose the R1 when you need to obtain sure / standard / repeatable results without sophisticated acoustical studies!

For some people, all this may sound exaggerate, but don't forget that in this life and universe, the good luck or randomness plays a constructive role, name it evolution, sometimes, as in the Roundffusor1's case were a design progression of interrelated phenomena evolved in this patent. Or, if you prefer, stay put in the past... The Useful Challenge!

The R1 is built from high impact polystyrene
 R1's dimensions: 58 x 58 x 11 cm Unit weight: 2 Kg (one R1 + 2 wood rails).
 Packaged in hard carton boxes, 3 R1's units per box, each box about 9 Kg. Carton box external dimensions: 60 x 60 x 34 cm.
 Flammability rating: Standard ISO UL94/HB, 1, 6 mm. Standard finishes is white.



www.zainea.com